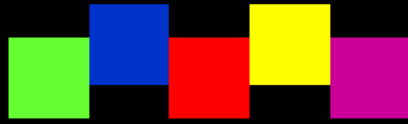


CREATIONS FROM A



COTSWOLD STUDIO

2024 Portfolio.

Introduction

“Painting is poetry that is seen instead of felt and poetry is a painting that is felt instead of seen.” – *Leonardo da Vinci*

Creations From A Cotswold Studio was started by Steve Allen purely because of a love of painting with vibrant colours. Steve is self-taught artist and has been painting for more than 20 years.

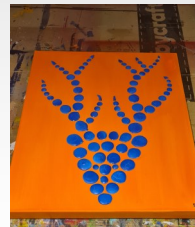
All the paintings we produce are bright, colourful and most importantly eye catching. Colour can change a room, it can lift a space and change the mood of the occupants when done right.



Commission from 2024 titled “Autumn Whimsy.....!”

Portfolio Ranges

New – The Pebbles Range



The Pebbles Range are brand new and born out of a restaurant commission. A restaurant chain at very short notice requested 19 artworks for their new restaurant opening. Which, as you can imagine had us working night and day. As part of that collection we decided to try some faux pebble artwork as a trial.

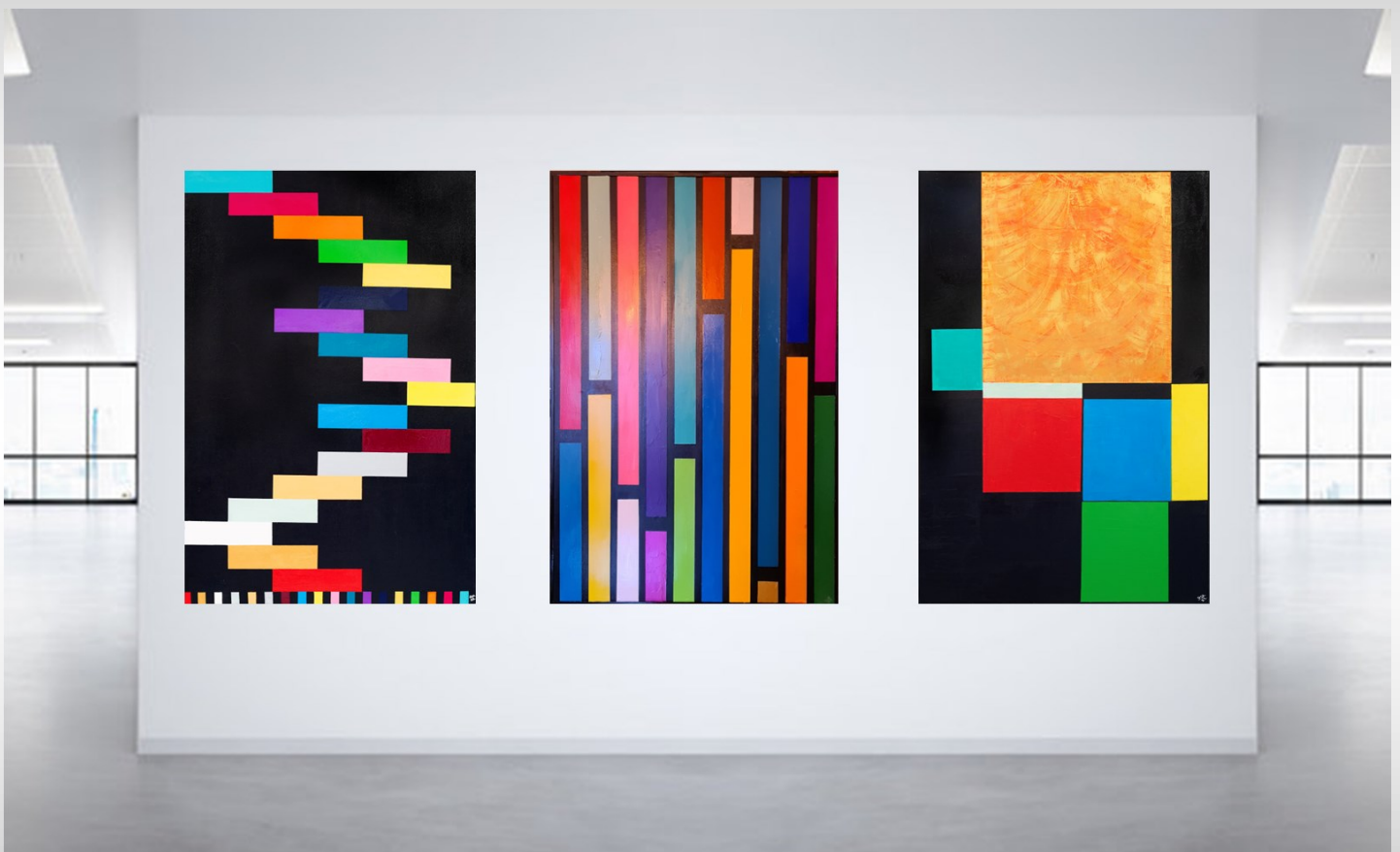
Using coloured plaster pieces shaped via a silhouette on a strong contrast background colour it gives quite an eye catching effect.

Again, we can offer all sorts of bespoke versions especially tailored colour pallets to match a room or office space.

Portfolio continued

Our work covers a multitude of different styles and forms and we'll endeavor to take you through these in the following pages.

The En Noir Range



The En Noir range are a series of paintings that use black as their contrast colour. The use of bright colours against a black background is nothing new, but we believe when done on a large scale, the effect is quite eye-catching.

In this group the paintings are called "Onwards & Upwards" "Parallel Lines" and "Mis-Shapes." respectively. All paintings are 150cm x 100cm acrylic on box canvas.

This is just a snippet of paintings available in the range, please see www.creations-cotswolds.com/ for more details.

Portfolio continued

The Office Space Range



The Office Space Range are specifically designed to brighten what can often be a mundane characterless room which primarily has a transient population that visit for short periods of time.

The pictures shown on this page are “Shapes”, “Smashed” and “Keys” respectively. All are 150cm x 100cm.

This is just a snippet of paintings available in the range, please see www.creations-cotswolds.com/ for more details.

Portfolio continued

The Silhouette Range



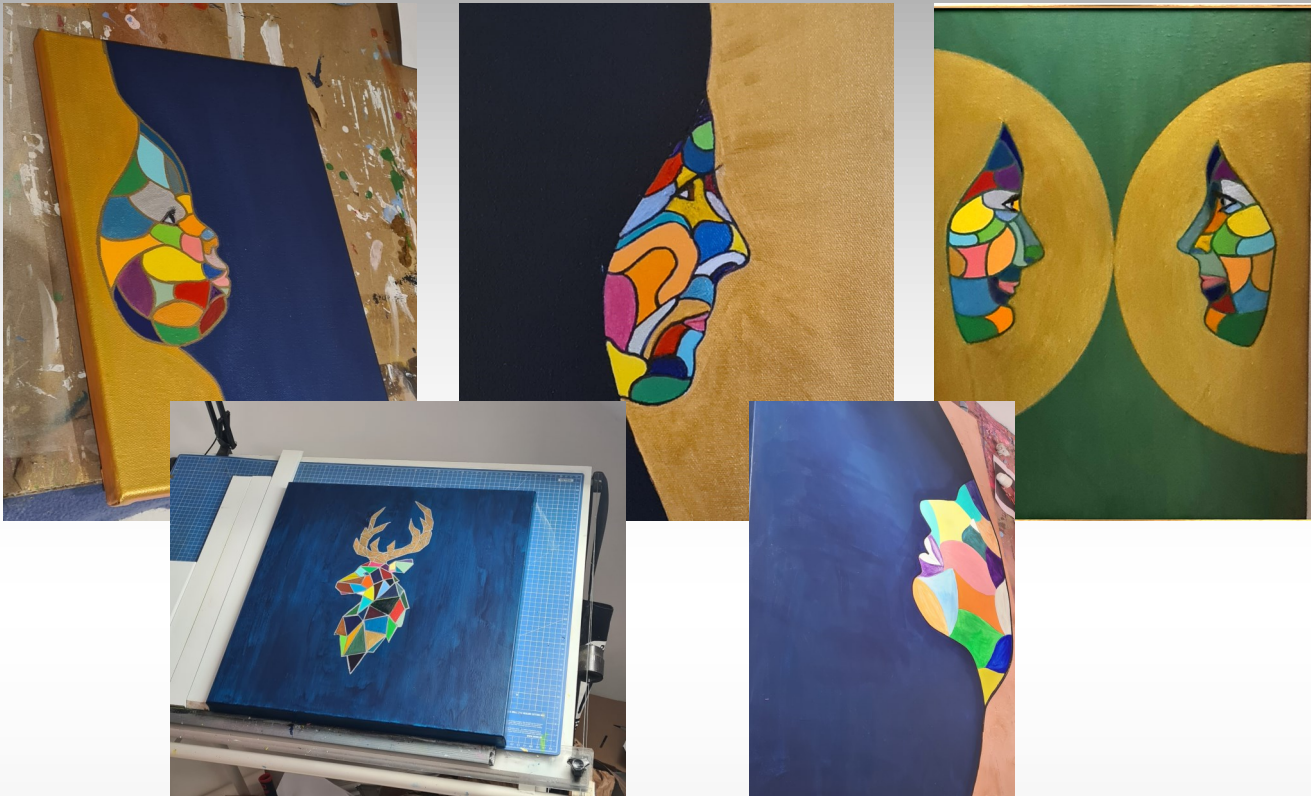
The Silhouette Range were specifically designed for a country public house and restaurant where the clientele were very keen country sports enthusiasts. It is definitely an ode to the famous Bristolian artist "Banksy" using modern techniques like pigmented powder, spray paint and fluid paints used with a blowing technique.

The pictures in this range are called "Full Size Shoot" "The Prince of Bredon and Vivid Shoot in Green". The first two are 150cm x 100cm and the third is 100cm x 100cm.

This is just a snippet of paintings available in the range, please see www.creations-cotswolds.com/ for more details.

Portfolio continued

The Segmented Colour Range



The paintings are created using a Segmented Colour Technique, which allows the artist to switch standard tones for bright, vivid colours. I hope you agree, it's different.

If you'd like a bespoke piece then all we need is a profile picture of the subject and we'll create a bespoke version of that person like no other.

The pictures on this page are called "Baby Lucy" "Maddie" "Sisters" "Harlequin Stag" and "She's a Rainbow".

This again is just a snippet of the paintings we have available in the range, please see www.creations-cotswolds.com/ for more details.

Ranges continued

The Trees Range



The Trees Range are abstract depictions of stunningly beautiful trees and show the diversity of shape and colour. Incidentally, this range are popular in the US. Following an exhibition in the heart of the Cotswold's we received 4 commission orders from California.

The pictures in this range are called "Red Tree" "Autumnal Tree" and "Autum Silver ". All paintings are 150cm x 100cm.

The one below is on the table at the moment.....



Summary

Hopefully you'll see from this 2024 portfolio that our range of styles, mediums and formats are extensive. Whether you require a private commission piece or a colour coordinated corporate collection, we'll be more than happy to help.

Just scan the QR code below to visit our website or email us at creationsatthestudio@outlook.com



All works are carried out by resident artist Steve Allen, and all works are original and hand painted. We only use printed versions if clients require corporate logo's to be added to artworks for personalisation purposes.

All artwork is copyright to © Creations from a Cotswold Studio.